

# FLOOR DESIGN

The floor plan is divided into several sections, each with a unique layout and dimensions. The central section features a large living area (room 1) with a sofa and a dining area (room 2) with a table and chairs. To the right, there are two bedrooms (rooms 3 and 4) and a bathroom (room 5). The bottom section includes a kitchen (room 6) and a living area (room 7). The top section shows a large living area (room 8) and a dining area (room 9). The right side of the plan features a large living area (room 10) and a dining area (room 11). The bottom right corner includes a kitchen (room 12) and a living area (room 13). The dimensions for each room are as follows:

| Room Number | Dimensions (m)          |
|-------------|-------------------------|
| 1           | 39.77 x 65.67 x 70.90   |
| 2           | 25.17 x 12.95           |
| 3           | 5.23 x 3.08             |
| 4           | 10.18 x 22.00           |
| 5           | 2.88 x 2.88             |
| 6           | 50.90 x 112.96 x 119.76 |
| 7           | 10.20 x 13.87           |
| 8           | 12.42 x 11.80           |
| 9           | 3.72 x 3.72             |
| 10          | 11.80 x 3.72            |
| 11          | 13.87 x 12.42           |
| 12          | 11.80 x 3.72            |
| 13          | 13.87 x 12.42           |
| 14          | 11.80 x 3.72            |
| 15          | 13.87 x 12.42           |
| 16          | 11.80 x 3.72            |
| 17          | 13.87 x 12.42           |
| 18          | 11.80 x 3.72            |
| 19          | 13.87 x 12.42           |
| 20          | 11.80 x 3.72            |
| 21          | 13.87 x 12.42           |
| 22          | 11.80 x 3.72            |
| 23          | 13.87 x 12.42           |
| 24          | 11.80 x 3.72            |
| 25          | 13.87 x 12.42           |
| 26          | 11.80 x 3.72            |
| 27          | 13.87 x 12.42           |
| 28          | 11.80 x 3.72            |
| 29          | 13.87 x 12.42           |
| 30          | 11.80 x 3.72            |
| 31          | 13.87 x 12.42           |
| 32          | 11.80 x 3.72            |
| 33          | 13.87 x 12.42           |
| 34          | 11.80 x 3.72            |
| 35          | 13.87 x 12.42           |
| 36          | 11.80 x 3.72            |
| 37          | 13.87 x 12.42           |
| 38          | 11.80 x 3.72            |
| 39          | 13.87 x 12.42           |
| 40          | 11.80 x 3.72            |
| 41          | 13.87 x 12.42           |
| 42          | 11.80 x 3.72            |
| 43          | 13.87 x 12.42           |
| 44          | 11.80 x 3.72            |
| 45          | 13.87 x 12.42           |
| 46          | 11.80 x 3.72            |
| 47          | 13.87 x 12.42           |
| 48          | 11.80 x 3.72            |
| 49          | 13.87 x 12.42           |
| 50          | 11.80 x 3.72            |



# HARMONIA RESIDENCE

|  |           |     |    |  |  |  |  |      |           |            |  |  |  |
|--|-----------|-----|----|--|--|--|--|------|-----------|------------|--|--|--|
| Building Area:                                     |           |     |    |  |  |  |  |      |           |            |  |  |  |
| plot 336   | plot area | 898 | m2 |  |  |  |  |      |           |            |  |  |  |
| Allowed density (Building Coefficient x Plot Area) |           |     |    |  |  |  |  | 160% | 1436.8 m2 |            |  |  |  |
| Increase of density 1 - energy efficient building  |           |     |    |  |  |  |  | 5%   | 71.84 m2  |            |  |  |  |
| Increase of density 2 - incentives scheme          |           |     |    |  |  |  |  | 0%   | 0 m2      |            |  |  |  |
| Increase of density 3 -                            |           |     |    |  |  |  |  |      |           | m2         |  |  |  |
| Total density used -                               |           |     |    |  |  |  |  |      |           | 1508.64 m2 |  |  |  |

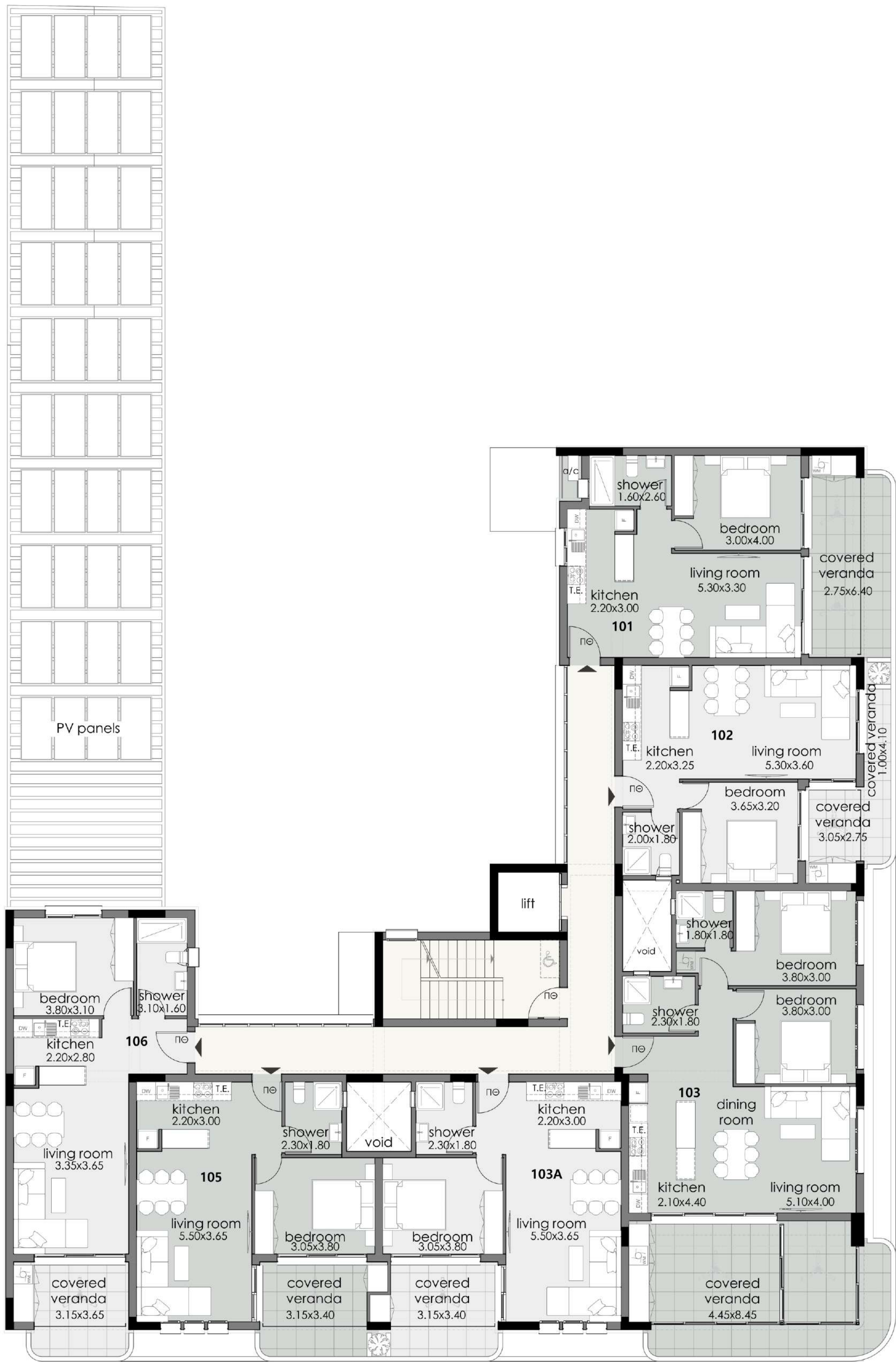
| PROPERTY NO | USE             | FLOOR LEVEL | NO OF BEDROOMS | NO OF COVERED PARKING | 10% + 20% PARKING | NO OF UNCOVERED PARKING | FLAT AREA (m2) | COMMON AREA (m2) | COVERED VERANDA(m2) | UNCOVERED VERANDA (m2) | COVERED PARKING AREA (m2) | STORAGE AREA | TOTAL COVERED AREA (m2) |
|-------------|-----------------|-------------|----------------|-----------------------|-------------------|-------------------------|----------------|------------------|---------------------|------------------------|---------------------------|--------------|-------------------------|
|             | PARKING         | B           |                | 14                    | 6                 | 8                       |                | 30.00            |                     |                        | 620.00                    | 110.00       | 760.00                  |
|             | PARKING - LOBBY | GR          |                |                       |                   |                         |                | 84.00            |                     |                        | 249.00                    |              | 333.00                  |
| 101         | FLAT            | 1ST         | 1              |                       |                   | 1                       | 52.55          | 55.50            | 17.55               |                        |                           | 5.00         | 70.10                   |
| 102         | FLAT            | 1ST         | 1              |                       |                   | 1                       | 51.05          |                  | 11.30               |                        |                           | 5.00         | 62.35                   |
| 103         | FLAT            | 1ST         | 2              | 1                     |                   |                         | 78.10          |                  | 36.05               |                        |                           | 5.00         | 114.15                  |
| 103A        | FLAT            | 1ST         | 1              |                       |                   | 1                       | 53.60          |                  | 11.65               |                        |                           | 5.00         | 65.25                   |
| 105         | FLAT            | 1ST         | 1              |                       |                   | 1                       | 53.25          |                  | 11.60               |                        |                           | 5.00         | 64.85                   |
| 106         | FLAT            | 1ST         | 1              |                       |                   | 1                       | 55.40          |                  | 11.70               |                        |                           | 5.00         | 67.10                   |
| 201         | FLAT            | 2ND         | 1              | 1                     |                   |                         | 52.55          | 55.50            | 17.55               |                        |                           | 5.00         | 70.10                   |
| 202         | FLAT            | 2ND         | 1              | 1                     |                   |                         | 51.05          |                  | 11.30               |                        |                           | 5.00         | 62.35                   |
| 203         | FLAT            | 2ND         | 2              | 1                     |                   |                         | 78.10          |                  | 36.05               |                        |                           | 5.00         | 114.15                  |
| 203 A       | FLAT            | 2ND         | 1              |                       |                   | 1                       | 53.60          |                  | 11.65               |                        |                           | 5.00         | 65.25                   |
| 205         | FLAT            | 2ND         | 1              |                       |                   | 1                       | 53.25          |                  | 11.60               |                        |                           | 5.00         | 64.85                   |
| 206         | FLAT            | 2ND         | 1              |                       |                   | 1                       | 55.40          |                  | 11.70               |                        |                           | 5.00         | 67.10                   |
| 301         | FLAT            | 3RD         | 1              | 1                     |                   |                         | 52.55          | 55.50            | 17.55               |                        |                           | 5.00         | 70.10                   |
| 302         | FLAT            | 3RD         | 1              | 1                     |                   |                         | 51.05          |                  | 11.30               |                        |                           | 5.00         | 62.35                   |
| 303         | FLAT            | 3RD         | 2              | 1                     |                   |                         | 78.10          |                  | 36.05               |                        |                           | 5.00         | 114.15                  |
| 303 A       | FLAT            | 3RD         | 1              | 1                     |                   |                         | 53.60          |                  | 11.65               |                        |                           | 5.00         | 65.25                   |
| 305         | FLAT            | 3RD         | 1              | 1                     |                   |                         | 53.25          |                  | 11.60               |                        |                           | 5.00         | 64.85                   |
| 306         | FLAT            | 3RD         | 1              | 1                     |                   |                         | 55.40          |                  | 11.70               |                        |                           | 5.00         | 67.10                   |
| 401         | FLAT            | 4TH         | 3              | 2                     |                   |                         | 126.30         | 37.55            | 34.25               | 28.65                  |                           | 10.00        | 236.75                  |
| 402         | FLAT            | 4TH         | 3              | 2                     |                   |                         | 144.35         |                  | 42.45               | 18.85                  |                           | 10.00        | 215.65                  |
| 501         |                 | RF          |                |                       |                   |                         |                |                  |                     | 28.65                  |                           |              |                         |
| 502         |                 | RF          |                |                       |                   |                         |                |                  |                     | 91.85                  |                           |              |                         |
|             |                 | ROOF        |                |                       |                   |                         |                | 17.70            |                     | 170.00                 |                           |              | 187.70                  |
| TOTAL       |                 |             |                |                       |                   |                         | 1302.50        | 335.75           | 376.25              | 338.00                 | 869.00                    | 110.00       | 3064.50                 |

# GROUND FLOOR PLAN





# 1<sup>ST</sup> FLOOR PLAN

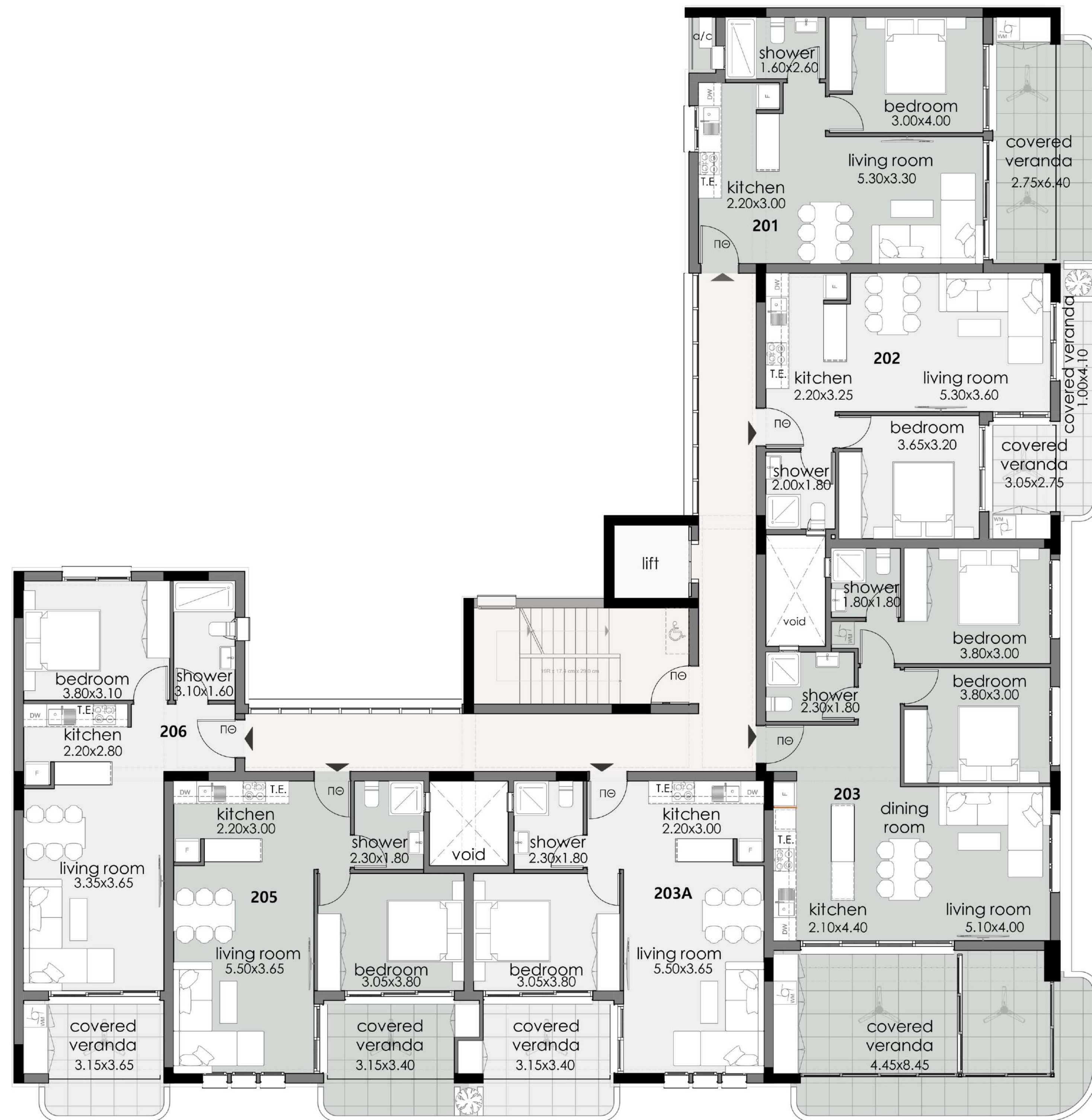


FIRST FLOOR

| APT  | FLOOR | No of Bedrooms | APARTMENT AREA | COVERED VERANDA | ROOF GARDEN | COMMON AREA | TOTAL AREA | COVERED PARKINGS | UNCOVERED PARKINGS | STORAGE |
|------|-------|----------------|----------------|-----------------|-------------|-------------|------------|------------------|--------------------|---------|
| 101  | 1ST   | 1              | 52.55 m2       | 17.55 m2        |             | 9 m2        | 79.1 m2    |                  | 1                  | 1       |
| 102  | 1ST   | 1              | 50.45 m2       | 11.30 m2        |             | 9 m2        | 70.75 m2   |                  | 1                  | 1       |
| 103  | 1ST   | 2              | 77.50 m2       | 36.05 m2        |             | 10.25 m2    | 123.8 m2   | 1                |                    | 1       |
| 103A | 1ST   | 1              | 52.95 m2       | 11.65 m2        |             | 9 m2        | 73.60 m2   |                  | 1                  | 1       |
| 105  | 1ST   | 1              | 52.55 m2       | 11.60 m2        |             | 9 m2        | 76.15 m2   |                  | 1                  | 1       |
| 106  | 1ST   | 1              | 55.40 m2       | 11.70 m2        |             | 9 m2        | 76.1 m2    |                  | 1                  | 1       |



# 2<sup>ND</sup> FLOOR PLAN

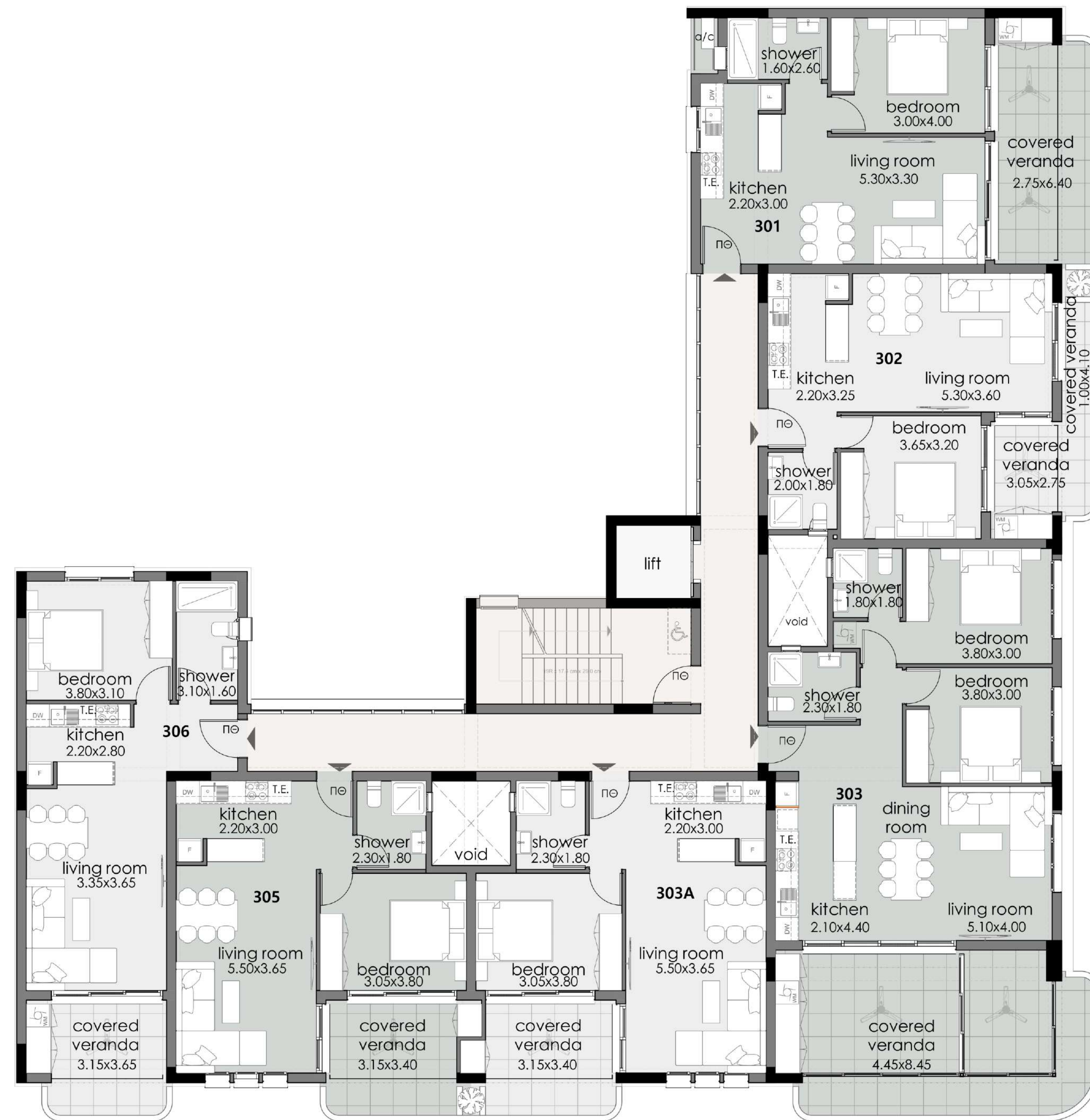


SECOND FLOOR

| APT  | FLOOR | No of Bedrooms | APARTMENT AREA | COVERED VERANDA | ROOF GARDEN | COMMON AREA | TOTAL AREA | COVERED PARKINGS | UNCOVERED PARKINGS | STORAGE |
|------|-------|----------------|----------------|-----------------|-------------|-------------|------------|------------------|--------------------|---------|
| 201  | 2ND   | 1              | 52.55 m2       | 17.55 m2        |             | 9 m2        | 79.1 m2    | 1                |                    | 1       |
| 202  | 2ND   | 1              | 50.45 m2       | 11.30 m2        |             | 9m2         | 70.75 m2   |                  | 1                  | 1       |
| 203  | 2ND   | 2              | 77.50 m2       | 36.05 m2        |             | 10.25 m2    | 123.8 m2   | 1                |                    | 1       |
| 203A | 2ND   | 1              | 52.95 m2       | 11.65 m2        |             | 9m2         | 73.60 m2   |                  | 1                  | 1       |
| 205  | 2ND   | 1              | 52.55 m2       | 11.60 m2        |             | 9m2         | 76.15 m2   |                  | 1                  | 1       |
| 206  | 2ND   | 1              | 55.40 m2       | 11.70 m2        |             | 9m2         | 76.1 m2    | 1                |                    | 1       |



# 3<sup>RD</sup> FLOOR PLAN



THIRD FLOOR

| APT  | FLOOR | No of Bedrooms | APARTMENT AREA       | COVERED VERANDA      | ROOF GARDEN | COMMON AREA          | TOTAL AREA           | COVERED PARKINGS | UNCOVERED PARKINGS | STORAGE |
|------|-------|----------------|----------------------|----------------------|-------------|----------------------|----------------------|------------------|--------------------|---------|
| 301  | 3RD   | 1              | 52.55 m <sup>2</sup> | 17.55 m <sup>2</sup> |             | 9 m <sup>2</sup>     | 79.1 m <sup>2</sup>  | 1                |                    | 1       |
| 302  | 3RD   | 1              | 50.45 m <sup>2</sup> | 11.30 m <sup>2</sup> |             | 9 m <sup>2</sup>     | 70.75 m <sup>2</sup> | 1                |                    | 1       |
| 303  | 3RD   | 2              | 77.50 m <sup>2</sup> | 36.05 m <sup>2</sup> |             | 10.25 m <sup>2</sup> | 123.8 m <sup>2</sup> | 1                |                    | 1       |
| 303A | 3RD   | 1              | 52.95 m <sup>2</sup> | 11.65 m <sup>2</sup> |             | 9 m <sup>2</sup>     | 73.60 m <sup>2</sup> | 1                |                    | 1       |
| 305  | 3RD   | 1              | 52.55 m <sup>2</sup> | 11.60 m <sup>2</sup> |             | 9 m <sup>2</sup>     | 76.15 m <sup>2</sup> | 1                |                    | 1       |
| 306  | 3RD   | 1              | 55.40 m <sup>2</sup> | 11.70 m <sup>2</sup> |             | 9 m <sup>2</sup>     | 76.1 m <sup>2</sup>  | 1                |                    | 1       |



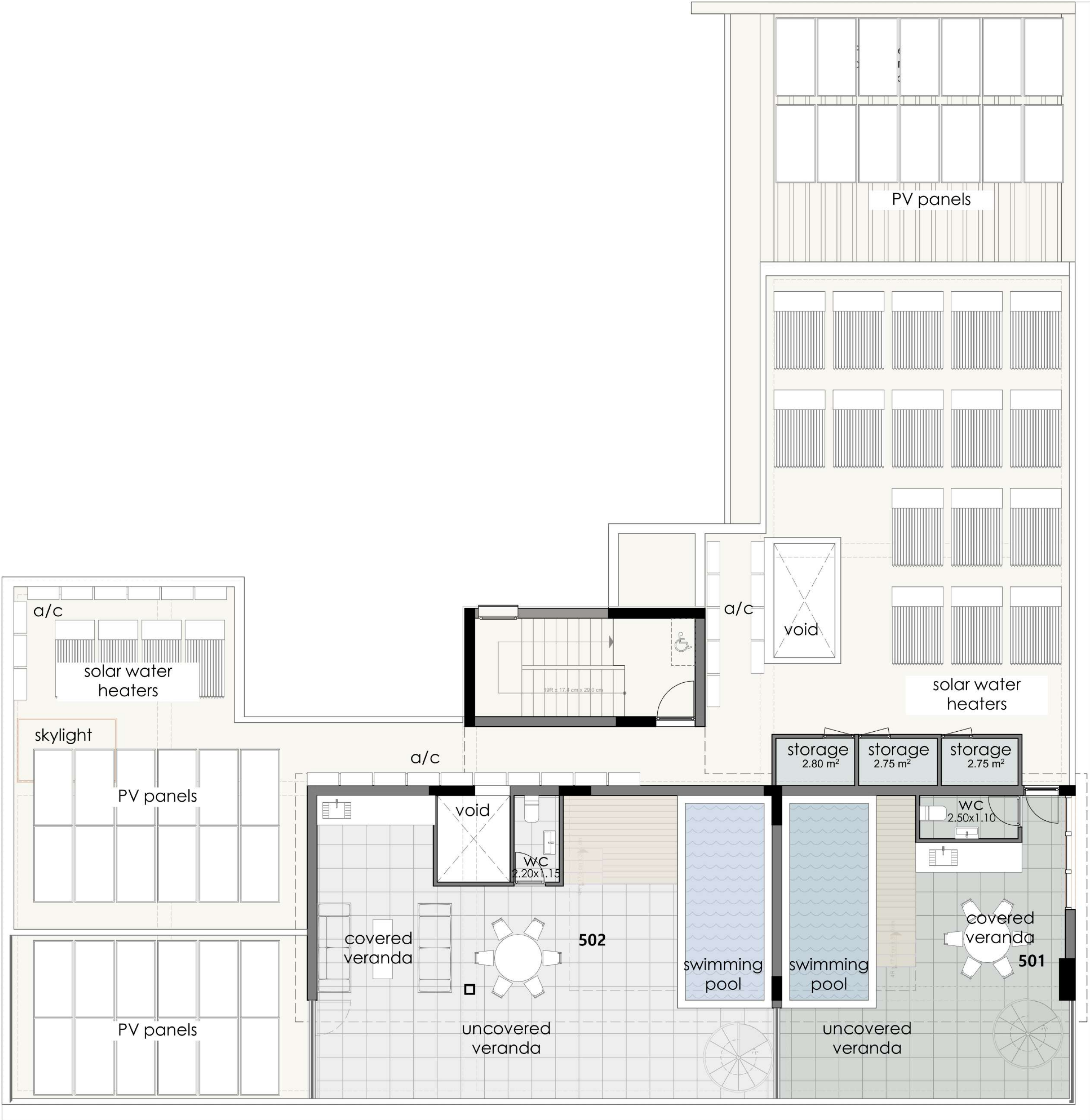
4<sup>TH</sup> FLOOR PLAN



FOURTH FLOOR

| APT | FLOOR | No of Bedrooms | APARTMENT AREA | COVERED VERANDA   | COMMON AREA | TOTAL AREA | ROOF GARDEN | COVERED PARKINGS | UNCOVERED PARKINGS | STORAGE |
|-----|-------|----------------|----------------|-------------------|-------------|------------|-------------|------------------|--------------------|---------|
| 501 | 4TH   | 3              | 125.10 m2      | 25.70m2           | 18.90 m2    | 208.55 m2  | 1           | 1                |                    | 1       |
| 502 | 4TH   | 3              | 143.55 m2      | 42.45 m2          | 18.90m2     | 223.70 m2  | 1           | 1                |                    | 1       |
|     |       |                |                | UNCOVERED VERANDA |             |            |             |                  |                    |         |
| 501 | 4TH   |                |                | 30.30+8.55m2      |             |            |             |                  |                    |         |
| 502 | 4TH   |                |                | 18.80 m2          |             |            |             |                  |                    |         |

# ROOF FLOOR PLAN





# R.O.I 21 PROPERTIES

Based in Limassol, R.O.I 21 Properties takes great pride in delivering distinctive projects throughout the city we cherish. With a strong focus on functional aesthetics, cutting-edge technology, and sustainability, we strive to enhance our customers' lives while preserving the beauty of this island we proudly call home. Our commitment to quality and innovation drives us to create spaces that not only meet the needs of modern living but also contribute to a sustainable future. By integrating environmentally friendly practices and materials into our developments, we ensure that

our projects are not only visually appealing but also beneficial to the community and the environment. At R.O.I 21 Properties, we believe that every project is an opportunity to make a positive impact, and we are dedicated to crafting homes that reflect our values and vision for a better tomorrow.

***For more information please visit us at:***  
***[www.roi21.com](http://www.roi21.com)***



**HARMONIA**  
RESIDENCE